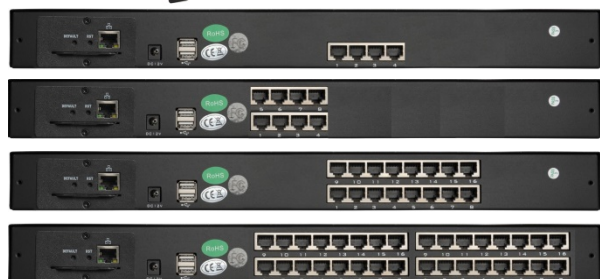


# AK-1704-K5-IP / AK-1708-K5-IP / AK-1716-K5-IP / AK-1732-K5-IP



- 17" LCD Monitor with LED Backlight
- 4 / 8 / 16 / 32 Port CAT.5 IP-KVM
- Installation Depth 559mm only



AK-1704-K5-IP / AK-1708-K5-IP / AK-1716-K5-IP / AK-1732-K5-IP is a 17" Monitor-Keybaord-Drawer with LED backlight. A value keyboard with number block and touchpad and the integrated 4 / 8 / 16 / 32 Port CAT.5 IP-KVM-Switch are completing the external design. The casing conforms the 1U Standard, is easily installed and mountable with the included mounting kit.

## Specifications

- The corresponding dongle **are included with delivery.**
- Cascadable up to a port capacity of 256 ports by tree-chaining
- Computer selection by push buttons, Keyboard -Hotkeys and OSD-Menu
- On-Screen-Display und system notification as a Pop-Up
- Automatic Power ON/OFF pushing the console back to the rack
- Supports all USB suitable operating systems: for example DOS, Windows Series / Server 2008 / Server 2013, Linux, MacOS, etc.
- Numeric LED status indicators for clear display of port status

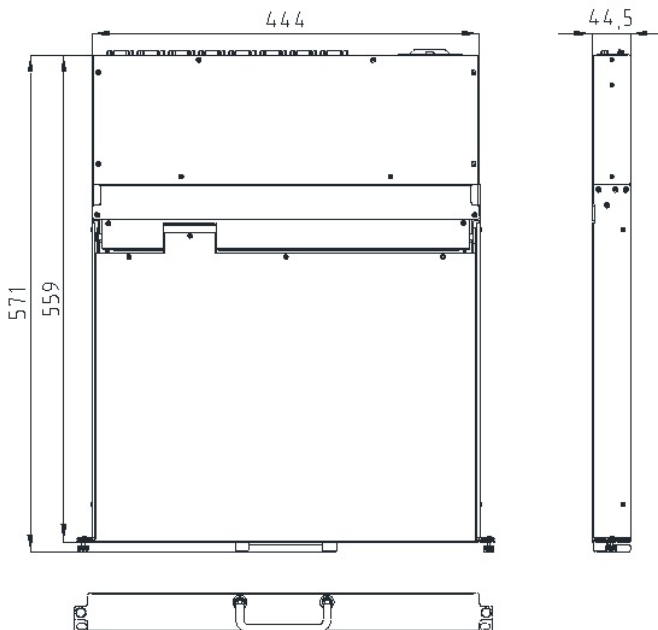
## Properties

- 1U 17" LCD console, 571mm total depth
- Stepless, adjustable angle from 0 to 105° with high quality torque hinges
- Easy one-man-assembly with the included installation angles
- Integrated 4 / 8 / 16 / 32 port CAT.5 IP-KVM-Switch
- Adjustable depth: 560mm to 900mm (Standard)
- Chromed metal handle
- Practical knurled screws
- High graphic resolution, up to 1280 x 1024 with 60Hz

## Keyboard versions

**Available in following versions:** German (DE), US-English (US), French (FR), Spanish (SP), Italian (IT). Swiss / German (CH) and swedish / finnish (SWE/FI)

**Versions available on request:** UK-English (UK), Turkish (TK), Russian(RU) and Arabian (AR)



## Technical data:

Connections KVM	Graphic / Keyboard / Mouse	4 / 8 / 16 / 32 x RJ-45
	Console(remote)	1 x RJ-45
	Keyboard / Mouse external	2 x USB-A
	Power supply	1 x DC-12V
	External Monitor	1 x HDDB-15 (only AK-1732-K5-IP)
	Remote Extener	1 x RJ-45 (only AK-1732-K5-IP), Extender KL-151 or KL-153 optional
Connections (Standard)	1x VGA und 1x USB <b>Standard (within delivery)</b>	4 / 8 / 16 / 32 x KD-DON-USB <b>Standard</b>
	1x VGA und 2x PS/2 <b>Optional</b>	KD-DON-PS/2 <b>Optional</b>
Switch	LCD settings	5 Pressure switch
	ON / OFF	1 Pressure switch
	OFF (LCD folded)	1 Semi-covert pressure switch
LED-Display panel	Operation	1 x green/red
	Number	1 x blue
	Capital letters	1 x blue
	Scroll	1 x blue
LED-Display KVM	Port/Switch	16 green (Port)
Emulation	Keyboard/ Mouse	USB & PS/2
	Display	JA
Port selection	Hotkey / OSD	
Graphic	17" LCD	1280 x 1024
	Colors	16,2 Mio.
	Frame Rate	H: 31,0 KHz. – 81,0 KHz. V: 56,0 KHz. – 76,0 KHz.
	Viewing angle	H: 140° / V: 130°
	Bandwith	140 Mhz.
	Brightness	300 cd/m <sup>2</sup>
	Contrast	700 : 1
	Reaktion time	4 ms.
	Pixel pitch	0,264mm (H) x 0,264mm (V)
	Backlight	LED
Input values	100 V. – 240 V. AC, 48 Hz – 62 Hz	
Output values	DC 12V., 4,16A	
Power consumption	230 V / 14,6 Watt	
Certification	RoHS, RoHS2, CE	
Environment	Operating temperature	-10 - 50°C
	Storage temperature	-20 – 60°C
	Humidity	0 – 80% relative humidity (non condensing)
Physical properties	Casing	High performance steel
	Color	RAL 9005
	Weight	17.6 kg incl. angles
	Dimension (L x W x H) w/o handle	555 x 450 x 44,5mm (19" / 1U)
	Dimension (L x W x H) w. handle	567 x 450 x 44,5mm (19" / 1U)
Packaging	Weight	18.6 kg
	Dimension (L x W x H)	74 x 62 x 18 cm